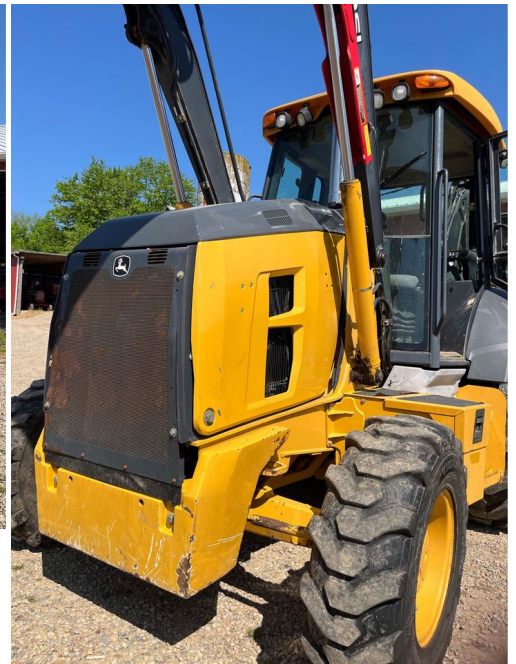
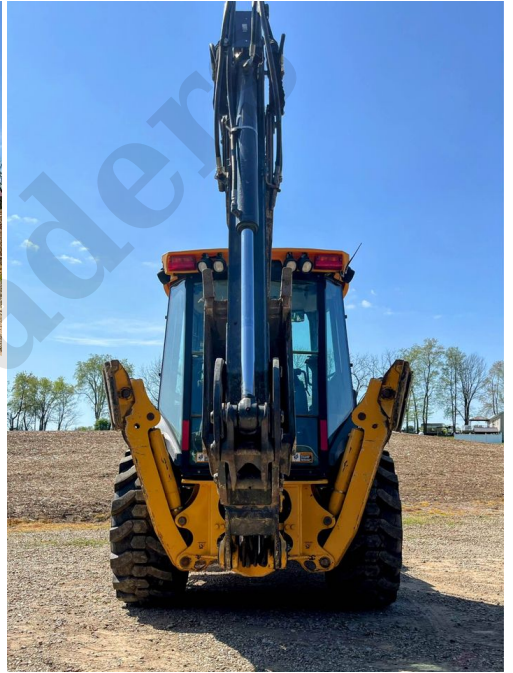


2016 JOHN DEERE 310SL BACKHOE







PRODUCT DESCRIPTION

2016 John Deere 310sl backhoe

4900 Hours , Cab Pilot Controls , Extend Rear Hoe Assembly , Auxiliary Hydraulic 2/Way Flow Thumb , Dipper Extendable , Universal Quick Coupler , AMS Ready Hard Wired Comes With The Hoe , 92 Inch Front Quick Attach Bucket , 54 Inch Front Pallet Fork Attachment , 24 Inch Rear Bucket Attachment , 12 Inch Rear Bucket Attachment , , Standard Cab With Heat AC and Radio , Air Ride Seat Suspension
Cloth Seat

\$64,000

Contact

Adrienne

915-615-8555



November 23, 2024

Big Motor Traders LLC
3707 Cypress Creek Parkway
Ste 310 # 2062
Houston, TX 77068
United States

ADDITIONAL INFORMATION

Big Motor Traders