

**Case**

580C Construction King

**55 (41 kW) SAE NET HORSEPOWER**

Case-built 207 in³ (3392 cm³) high-torque diesel.

CHOICE OF TWO SYNCHRONIZED TRANSMISSIONS

8-speed mechanical shuttle or optional 4-speed with full power shuttle and torque converter.

CHOICE OF BACKHOES

14' (4267 mm) backhoe or 14'-18' (4267 - 5486 mm) telescoping Extendahoe. Over-center backhoe transport position for stability in loading and roading.

4,700 LB (2132 kg) SELF-LEVELING LOADER

Single lever controls bucket rollback, lift, dump, lower, float and return-to-dig.

UNITIZED MAIN FRAME

Absorbs heavy shock loads, maintains power train alignment, simplifies servicing.

COMPONENTIZED POWER TRAIN

Permits servicing of individual components without disturbing the rest of the drive line.

OPERATOR CONVENIENCE

Roomy work platform, sloping hood and grille, and 6-way adjustable seat improve visibility and operating efficiency.

Unit shown is equipped with non-standard items.

J I Case

A Tenneco Company

700 State Street Racine, WI 53404 U.S.A.



Specifications

580C Tractor

Construction King

ENGINE

Make and model	Case G207D diesel
Fuel	No. 2 diesel
Number of cylinders	4
Bore and stroke	4" x 4.125" (101.6 mm x 104.8 mm)
Displacement	207 in ³ (3392 cm ³)
Electrical system	12V
Battery	(2) 6V
Alternator	42 amp
Compression ratio	16.5 to 1
Fuel induction	Injectors
Fuel supply	Injection pump
Air cleaner	Dry type-replaceable element
Oil filter—full flow	Replaceable cartridge
Lubrication	Positive pressure
Cooling system	Pressurized—4 psi (0.28 kPa)
Horsepower	Power shuttle
(1) Mfg. rated	62 @ 2100 rpm (46.23 kW @ 2100 r/min)
(2) SAE net	55 @ 2100 rpm (41.01 kW @ 2100 r/min)
	Dry clutch
(1) Mfg. rated	57 @ 2100 rpm (42.50 kW @ 2100 r/min)
(2) SAE net	50 @ 2100 rpm (37.28 kW @ 2100 r/min)
	Power shuttle
Maximum torque, ft-lb (m-kw)	
(1) Mfg. rated	163 @ 1300 rpm (221 Nm @ 1300 r/min)
(2) SAE net	153 @ 1300 rpm (207 Nm @ 1300 r/min)
	Dry clutch
(1) Mfg. rated	147 @ 1400 rpm (199 Nm @ 1400 r/min)
(2) SAE net	137 @ 1400 rpm (185 Nm @ 1400 r/min)

- Manufacturer's rating of maximum engine horsepower or torque at flywheel when equipped with oil and water pumps. Fuel set at maximum quantity for this application. Corrected to sea level 29.92" (760 mm) Hg and 60°F (16°C) dry air.
- SAE net flywheel horsepower or torque of engine as applied to this vehicle when equipped with operating accessories including oil and water pumps, alternator, air cleaner, fan and muffler. Corrected to 500' (152.4 m) altitude with .38" (10 mm) Hg vapor pressure 29.38" (746 mm) Hg observed barometer and 85°F (29°C) per SAE J816a specifications.

POWER TRAIN

Standard transmission: 8-speed synchronized sliding spur gear with dual range lever and synchronized shuttle shift. Permits on-the-go shifting up from 2nd to 3rd to 4th and down from 4th to 3rd in both Hi and Lo ranges.

Optional transmission: 4-speed sliding spur gear with full power shuttle and torque converter. Permits on-the-go shifting up from 2nd to 3rd to 4th and down from 4th to 3rd.

Clutch: Foot-operated, mechanical, single plate, dry disc, 11" (279.4 mm) diameter with ferrometallic lining (not on torque converter models).

Torque converter: Single-stage hydrokinetic type (2.53 to 1 ratio) — optional.

Reversing unit: Standard — synchronized sliding gear (manual). Optional — full power (hydraulic clutches)

Brakes: Individual or simultaneous foot-actuated, hydraulic self-adjusting, 6.5" (165 mm) bands and disc with over-center type parking brake.

Differential lock.

FRONT AXLE RATING

Dynamic	44,000 lbs (19 958 kg)
Static	11,500 lbs (5216 kg)

REAR AXLE RATING

Dynamic	54,000 lbs (24 494 kg)
Static	13,500 lbs (6123 kg)

STEERING

Power steering	Hydrostatic
Turning ratio (stop to stop)	2-3/4 turns
Cylinders — two, double acting	1.5" dia x 6.5" stroke (38.1 mm dia x 165.1 mm stroke)

CAPACITIES

Cooling system	5.25 gal (19.8 liters)
Fuel tank	22 gal (83 liters)
Engine lubricating oil w/filter	7 qts (6.6 liters)
w/o filter	6 qts (5.7 liters)
Transmission	
Power shuttle	8 qts (7.6 liters)
Mechanical shuttle	2 qts (1.9 liters)
Steering	3 qts (2.8 liters)
Reservoir fill	1 qt (1.9 liters)
Hydraulic reservoir refill	17 gal (64 liters)
Hydraulic reservoir refill and filter	17.5 gal (66 liters)

TRACTOR OPERATIONAL DATA

Curb clearance circle diameter — w/o brakes	24'1" (7340 mm)
w/brakes	21'2" (6451 mm)

TRAVEL SPEEDS mph (km/h) of standard loader/backhoe

Standard: Synchronized shuttle shift transmission with ferrometallic clutch @ high idle (2300 rpm), 14.9 x 24, R4 tires:

	1st		2nd		3rd		4th	
	mph	km/h	mph	km/h	mph	km/h	mph	km/h
Low range								
Forward	2.1	3.4	4.1	6.6	7.7	12.4	13.9	22.4
Reverse	2.6	4.2	5.1	8.2	9.6	15.4	17.5	28.2
Direct range								
Forward	3.4	5.5	6.6	10.6	12.5	20.1	22.5	36.2
Reverse	4.3	6.9	8.1	13.0	15.3	24.6	27.9	44.9

Optional: Full power shuttle transmission and torque converter @ high idle (2300 rpm) (2300 r/min), 14.9 x 24, R4 tires:

	1st		2nd		3rd		4th	
	mph	km/h	mph	km/h	mph	km/h	mph	km/h
Forward	3.9	6.3	6.8	10.9	12.2	19.6	21.4	34.4
Reverse	3.5	5.6	6.1	9.8	11.0	17.7	19.5	31.4

TRACTOR DIMENSIONS

Overall length	10'11.3" (3327 mm)
Overall width	6'5.5" (1968 mm) to 6'8.1" (2034 mm)
Height: to top of ROPS	8'6" (2591 mm)
Height: to top of cab	8'6" (2591 mm)
Height: to top of exhaust stack	8'9" (2667 mm)
Height: to top of steering wheel	5'11.8" (1824 mm)
Ground clearance (tractor main frame)	10.8" (356 mm)
Front wheel tread	4'11" (1499 mm) to 5'2" (1575 mm)
Rear wheel tread	5' (1524 mm) to 5'6" (1676 mm)
Wheel base	6'10" (2083 mm)

NOTE: Specifications taken with 7.50 x 16, 10PR, (L1) rib front tires. 14.9 x 24, 6PR, (R4) rear tires, ROPS 14' (4267 mm) backhoe, loader, 74" (1880 mm) short lip and 24" (610 mm) trenching bucket, and standard equipment unless otherwise specified.

TRACTOR APPROXIMATE SHIPPING WEIGHTS

	Power shuttle and torque converter	Dry clutch
Drawbar tractor with ROPS	5614 lbs (2546 kg)	5614 lbs (2546 kg)

580C TIRES

Used on all machines

Type	Size	Ply Rating	Tread	PSI	Pressure kg/cm ²
Front	7.50x16	10	(L1) Rib	56	3.9
Front	7.50x16	10	(L1) Truck Tread	56	3.9
Front	11Lx16	10	(L1) Truck Tread	48	3.4

Used on all machines without Extendahoe

Rear	14.9x24	6	(R4) Utility Traction	20	1.4
Rear	14.9x24	8	(R4) Utility Traction	24	1.7
Rear	16.9x24	8	(R4) Utility Traction	24	1.7
Rear	17.5Lx24	6	(R4) Ind. Sure Grip	16	1.1
Rear	17.5Lx24	8	(R4) Ind. Sure Grip	22	1.5

Used on machines with Extendahoe

Rear	16.9x24	8	(R4) Utility Traction	24	1.7
Rear	17.5Lx24	8	(R4) Ind. Sure Grip	22	1.5

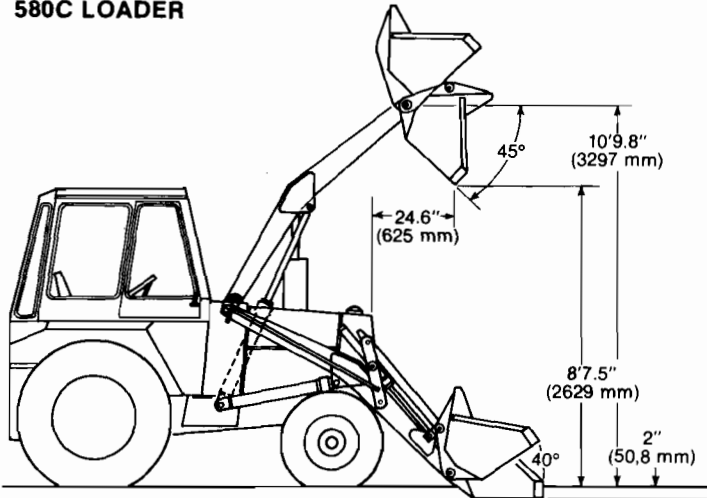
TRACTOR STANDARD EQUIPMENT

Anti-freeze solution to -20°F (-29°C). Heavy-duty front axle with fixed tread of 59" (1499 mm). Dry type replaceable cartridge air cleaner. Heavy-duty clutch. Swinging drawbar. 12-volt electrical system. Case G207D diesel. Rear fenders. Full flow oil filter. Floor plates. Front wrapper and heavy-duty grille. Gauges and instruments: condition light for loader and backhoe hydraulic system filter, converter temperature gauge (power shuttle tractor), fuel level gauge, temperature gauge, hourmeter, engine speed indicator (tachometer), engine oil pressure warning light, alternator indicator light, air cleaner restriction light. Illuminated instrument cluster. ROPS canopy with two shock-mounted headlights and combination rear working and red taillight. Up-right oval muffler with deflector. Deluxe easy-ride seat. Hydrostatic steering. Hand and foot throttles. 14.9 x 24, 6PR, R4 Utility Traction tread rear tires. 7.50 x 16, 10PR, L1 front tires. Tool box. 8-speed mechanical shuttle transmission with clutch.

OPTIONAL EQUIPMENT

ROPS cab with seat belt. Anti-freeze to -40°F (-40°C). Engine side panels. Lock-up kit. Horn. Combination tail, stop, directional lights with flasher attachment. 23 hp (17.15 kW) 540 rpm (540 r/min) hydrostatic PTO with 6 tooth SAE 1.375" (35 mm) shaft. Front end weights. Modular 3-point hitch. Noise suppression kit. 4-speed power shuttle with torque converter. Back-up alarm. SMV emblem. Spark-arresting muffler. Cold weather starting aid. Arm rest. Rotating beacon. Heater and defroster. Special paint. Junior Road King seat.

580C LOADER



OPERATIONAL DATA*

Lift capacity to full height	4700 lbs (2132 kg)
Height to bucket hinge pin	10'9.8" (3297 mm)
Bucket rollback at ground line	40°
Breakout force	7200 lbs (3266 kg)
Dump angle at full height	45°
Grading angle	110°

	Short Lip	Long Lip
Digging depth below ground bucket flat	2" (50.8 mm)	2" (50.8 mm)
Dump clearance at full height 45° dump	8'7.5" (2629 mm)	8'3" (2515 mm)
Dump reach at full height 45° dump	24.6" (625 mm)	28.6" (726 mm)
Reach—bucket on ground	5'11" (1808 mm)	6'5" (1956 mm)
Raising time to full height	4.4 sec	4.4 sec
Bucket dumping time	.8 sec	.8 sec
Lowering time, power down	3.0 sec	3.0 sec
Return-to-dig	3.6 sec	3.6 sec

LOADER DIMENSIONS

Overall operating height	13'2.8" (4034 mm)	13'2.8" (4034 mm)
Overall length—with loader	15'5.9" (4722 mm)	15'11" (4851 mm)
Overall width—with C/W or 3 pt. hitch	6'5.5" (1968 mm)	6'5.5" (1968 mm)
Turning clearance circle — bucket rollback—hinge pin at SAE carry position		
—brake turn	30'2.25" (9169 mm)	30'7" (9322 mm)
—without brakes	32'3" (9830 mm)	32'10" (10 008 mm)

LOADER APPROXIMATE SHIPPING WEIGHTS (less buckets)

NOTE: Weights include loader without bucket — with rear mounting arms — without rear attachments. Each machine is with 7.50 x 16, 10PR, (L1) Rib front tires and 14.9 x 24, 6PR, (R4) Utility Traction rear tires.

207D diesel—power shuttle	6875 lbs (3118 kg)
207D diesel—dry clutch	6875 lbs (3118 kg)
Rear counterweight	add 1495 lbs (678 kg)

LOADER BUCKET SIZES

Inch	mm	Type	Capacities (SAE)		Struck		Weight	
			ft ³	m ³	ft ³	m ³	lbs	kg
74	1880	Short Lip	21.06	0.60	17.81	0.50	600	272
74	1880	Long Lip	23.26	0.66	20.33	0.58	640	290
74.75	1899	4-in-1	23.84	0.67	19.62	0.56	1040	472
82	2083	Long Lip	27.69	0.78	23.59	0.67	760	345
82	2083	4-in-1	26.70	0.76	21.91	0.62	1130	513

LOADER HYDRAULIC SYSTEM

Hydraulic pump: Positive displacement, gear type
 Pump capacity: Power shuttle and dry clutch 26 gpm @ 2100 rpm @ 2300 psi (98 l/min @ 2100 r/min @ (15.85 kPa))
 Control valve main relief pressure (Loader valve): 2300 ± 50 psi (Cartridge relief) (15.85 ± 344 kPa)
 3-point hitch: 1800 ± 50 psi (12.41 ± 344 kPa)

Filtration: 25 micron, full-flow replaceable cartridge on return line. Condition indicator gauge for filter.

Loader control valves: Mono-cast, two or three spool. Single lever control for lift and tilt. Extra lever for 4-in-1 bucket. Lift lever has positive hold "float" position and "return-to-dig" feature.

Loader cylinders:
 Lift (2) 3" dia x 31.5" stroke, 1.75" rod (76 mm dia x 800 mm stroke, 44 mm rod)
 Tilt (2) 2.5" dia x 20" stroke, 1.5" rod (64 mm dia x 508 mm stroke, 38 mm rod)
 Clam (2) 3" dia x 9" stroke, 1.75" rod (76 mm dia x 229 mm stroke, 44 mm rod)

Hydraulic lines: steel tubing with brazed or flared fittings and wire-braid, high pressure hose with crimped, full-flow fittings.

4-IN-1 BUCKET OPERATIONAL AND DIMENSIONAL DATA

Lift capacity to full height	4170 lbs (1891 kg)
Height to bucket hinge pin	10'10" (3302 mm)
Bucket rollback at ground line	40°
Dump angle at full height	50°
Grading angle — clam closed	118°
Digging depth below ground — bucket flat	4.5" (114 mm)
Digging depth — using clam	46" (1168 mm)
Dozing depth — clam open	4.5" (114 mm)
Dump clearance at full height—50° dump—clam dump	9'7.2" (2926 mm)
—bucket dump	8'6" (2591 mm)
Dump reach at full height — 50° dump	1'9" (533 mm)
Breakout force	6370 lbs (28 335 N)
Reach — bucket on ground	54" (1372 mm)
Raising time to full height	4.4 sec
Bucket dumping time	.8 sec
Lowering time, power down	2.5 sec
Return-to-dig	3.0 sec
Overall operating height	15'2.5" (4635 mm)
Overall length — with bucket on ground	15'10.6" (4841 mm)
Turning clearance circle — brake turn	31'4" (9550 mm)
— without brakes	33'2" (10 109 mm)
Ground clearance (at backhoe main frame)	10.5" (267 mm)
Width of dozer cutting edge	6'9.3" (2065 mm)
Maximum clam opening	3'1.3" (947 mm)
Moldboard height	2'10.5" (876 mm)

NOTE: Specifications taken with 7.50 x 16, 10PR, (L1) Rib front tires, 14.9 x 24, 6PR, (R4) Utility Traction rear tires, 4-in-1 bucket, ROPS canopy 14' (4267 mm), backhoe w/24" (610 mm) trenching bucket and standard equipment.

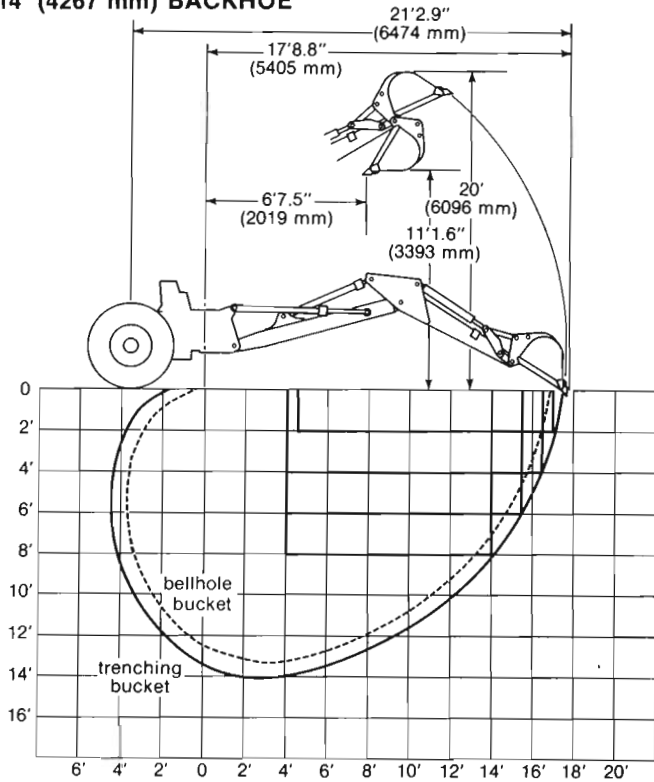
LOADER MODEL STANDARD EQUIPMENT

All tractor standard equipment with fixed disc wheels (no drawbar) plus loader (less bucket) and hydraulic system complete. Hydraulic-leveling. Single lever control. Return-to-dig. Bucket position gauge.

LOADER MODEL OPTIONAL EQUIPMENT

All tractor optional equipment plus: Rear counterweight. Bucket teeth. Backfill blade. Pallet forks. Accessory hydraulics.

14' (4267 mm) BACKHOE



580C CONSTRUCTION KING WITH LOADER AND 14' (4267 mm) BACKHOE OPERATIONAL DATA

Overall reach from rear axle centerline.....	21'2.6" (6467 mm)
Digging radius from swing pivot.....	17'8.5" (5398 mm)
Digging depth — SAE.....	14'2.2" (4523 mm)
Loading height.....	11'1.6" (3393 mm)
Loading reach.....	6'7.5" (2019 mm)
Swing arc.....	180°
Bucket rotation — #1 position.....	166°
— #2 position.....	151°
Stabilizer spread in operating position	
— angled.....	9'1.5" (2781 mm)
— straight.....	9'5" (2870 mm)
Stabilizer spread in transport position	
— angled.....	6'11.8" (2128 mm)
— straight.....	7'9.2" (2367 mm)
Stabilizer angle from straight position.....	20°
Digging force, bucket cylinder, SAE.....	9732 lbs (43 290 N)
Digging force, dipper cylinder, SAE.....	5549 lbs (24 683 N)
Leveling angle (maximum grade on which the backhoe will make a vertical cut)	
— stabilizers angled.....	12°
— stabilizers straight.....	13°

14' (4267 mm) BACKHOE DIMENSIONS

Overall height, maximum.....	20' (6096 mm)
Transport height.....	11'2.5" (3416 mm)
Overall width—travel position	
— stabilizers angled.....	6'11.8" (2128 mm)
— stabilizers straight.....	7'9.2" (2367 mm)
Overall length — transport position	
— short lip bucket.....	21'10" (6655 mm)
— long lip bucket.....	22'3.1" (6784 mm)
— 4-in-1 bucket.....	22'6" (6721 mm)
Ground clearance at backhoe main frame.....	10.5" (267 mm)
Angle of departure.....	22°

580C WITH 14' (4267 mm) BACKHOE APPROXIMATE SHIPPING WEIGHTS (less buckets)

207D diesel — power shuttle.....	10,185 lbs (4620 kg)
207D diesel — dry clutch.....	10,185 lbs (4620 kg)

NOTE: Specifications taken with 24" (610 mm) trenching bucket, 74" (1880 mm) short lip loader bucket, 7.50 × 16, 10PR, (L1) Rib front tires, 14.9 × 24, 6PR, (R4) Utility Traction rear tires, ROPS canopy and standard equipment unless otherwise specified.

580C BACKHOE HYDRAULIC SYSTEM

One basic hydraulic system serves both loader and backhoe. For complete details, see loader section.

Backhoe cylinders:

Stabilizer (2).....	4" dia × 19.4" stroke, 2" rod (102 mm dia × 503 mm stroke, 51 mm rod)
---------------------	--

Swing (2).....	4" dia × 11.2" stroke, 2" rod (102 mm dia × 285 mm stroke, 51 mm rod)
Boom (2).....	3.2" dia × 42.1" stroke, 1.75" rod (83 mm dia × 1069 mm stroke, 44 mm rod)
Dipper (1).....	4" dia × 35.12" stroke, 2" rod (102 mm dia × 892 mm stroke, 51 mm rod)

Backhoe controls: Sectional valve with four spools — boom, dipper, bucket and swing. Foot swing or hand swing (optional), regeneration and hydraulic cushioned swing stops.

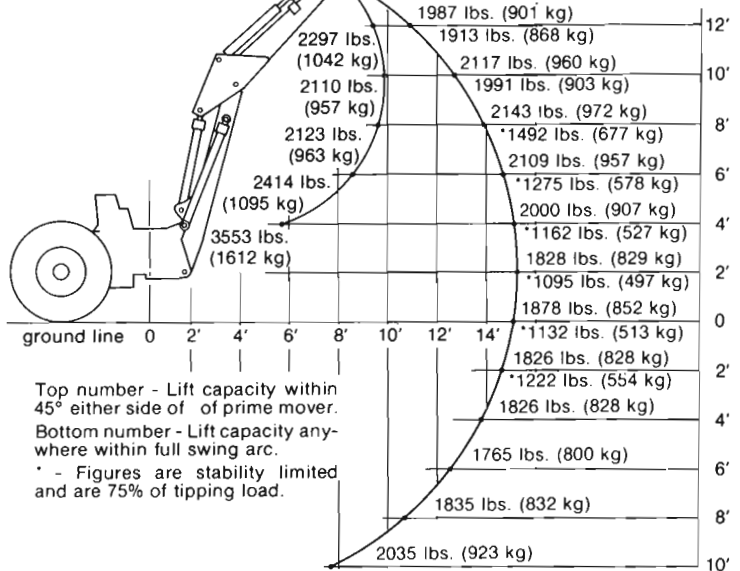
Mono-cast, two spool valve for stabilizers with pilot check valves.

BACKHOE BUCKETS

Width Inch	mm	Type	Weight	
			lbs	kg
12	305	Trenching	217	98
18	457	Trenching	258	117
24	610	Trenching	295	134
30	762	Trenching	330	150
36	914	Trenching	378	171
18	457	HD Trenching	326	148
24	610	HD Trenching	386	175
30	762	HD Trenching	446	202
36	914	HD Trenching	475	215
12	305	Bellhole	122	55
16	406	Bellhole	170	77
30	762	Bellhole	236	107
36	914	Bellhole/Graveyard	263	119
		Frost point	161	73

LIFT CAPACITY FIGURES ON THIS CHART ARE 87% OF THE MAXIMUM LIFT FORCE PER SAE DEFINITION.

Figures stated in chart are determined by static test and do not include dynamic factors.



Top number - Lift capacity within 45° either side of of prime mover.
Bottom number - Lift capacity anywhere within full swing arc.
* - Figures are stability limited and are 75% of tipping load.

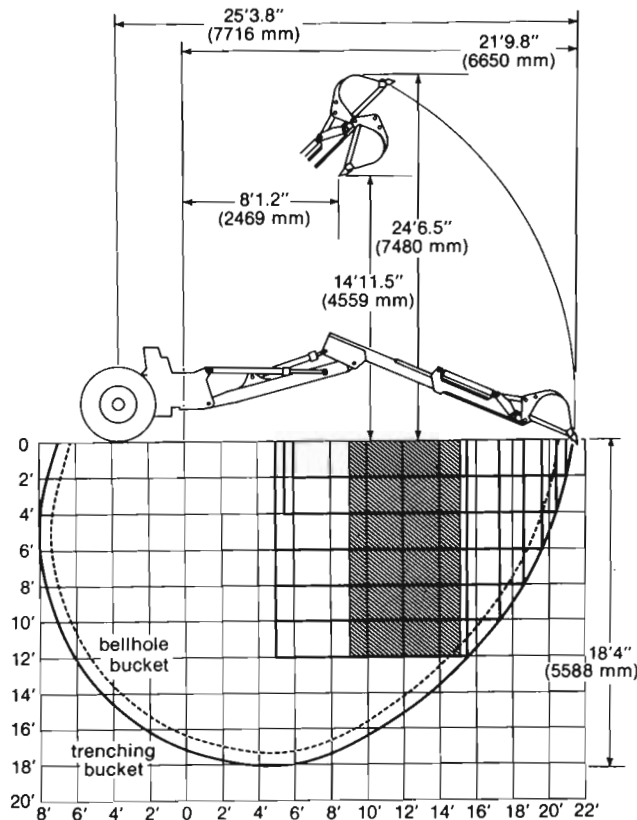
14' (4267 mm) BACKHOE STANDARD EQUIPMENT

All tractor standard equipment with fixed disc wheels (no drawbar). Model 35 Loader (less bucket) with hydraulic-leveling, single lever control, return-to-dig and bucket position gauge. Model 35 Backhoe (less bucket) with quick-disconnect mounting and single, turn around seat. Cleated stabilizers. Complete hydraulic system including three-lever, foot swing backhoe control.

14' (4267 mm) BACKHOE OPTIONAL EQUIPMENT

All tractor and loader optional equipment plus frost point ripper tooth. Dual-lever backhoe controls in lieu of foot swing. Case dipper light. Street-cemetery stabilizer pads. Heavy-duty Duro Mat pads. Heavy-duty backhoe teeth. Front counterweight. Boom lockout. Boom cylinder guards.

14' - 18' (4267 - 5486 mm) EXTENDAHOE



Overall length, loader bucket —	
— SAE carry position	22'3.6"
— short lip bucket	(6797 mm)
— long lip bucket	22'8.7"
	(6926 mm)
— 4-in-1 bucket	22'6.2"
	(6863 mm)
Ground clearance at backhoe	
— main frame	10.5"
	(267 mm)

NOTE: Specifications taken with 24" (610 mm) trenching bucket, 74" (1880 mm) short lip loader bucket, 7.50 x 16, 10PR, (L1) Rib front tires. 17.5L x 24, 8PR, (R4) Utility Traction rear tires, front 700 lb (318 kg) counterweight, ROPS canopy and standard equipment unless otherwise specified.

HYDRAULIC EXTENDAHOE APPROXIMATE SHIPPING WEIGHTS w/ROPS (less buckets)

G207D diesel — power shuttle	11,440 lbs (5189 kg)
G207D diesel — dry clutch	11,440 lbs (5189 kg)
Front counterweight for Extendahoe	705 lbs (320 kg)

EXTENDAHOE HYDRAULIC SYSTEM

See loader section for details.

BACKHOE CYLINDERS

Backhoe	
Stabilizer (2)	4" dia x 19.4" stroke, 2" rod (102 mm dia x 503 mm stroke, 51 mm rod)
Swing (2)	4" dia x 11.2" stroke, 2" rod (102 mm dia x 285 mm stroke, 51 mm rod)
Boom (2)	3.2" dia x 42.1" stroke, 1.75" rod (83 mm dia x 1069 mm stroke, 44 mm rod)
Dipper (1)	4" dia x 35.12" stroke, 2" rod (102 mm dia x 892 mm stroke, 51 mm rod)
Bucket (1)	3.5" dia x 30.6" stroke, 2" rod (89 mm dia x 777 mm stroke, 51 mm rod)
Dipper Extension (1)	3" dia x 48" stroke, 1.5" rod (76 mm dia x 1219 mm stroke, 38 mm rod)

EXTENDAHOE STANDARD EQUIPMENT

All tractor standard equipment with fixed disc wheels. Loader (less bucket) with single-lever control, return-to-dig and bucket position gauge. Hydraulic telescoping Extendahoe (less bucket). Complete hydraulic system including three-lever, foot swing backhoe control. Quick-disconnect mounting. Single, turn around seat. Cleated stabilizers. Front counterweight.

EXTENDAHOE OPTIONAL EQUIPMENT

Same as 14' (4267 mm) backhoe.

3-POINT MOD HITCH OPERATIONAL DATA

Cylinders:	
Lift (1)	3" dia x 8.4" stroke, 1.5" rod (76 mm dia x 214 mm stroke, 38 mm rod)
Tilt (1)	2.5" dia x 6.31" stroke, 1.25" rod (64 mm dia x 160 mm stroke, 32 mm rod)
Pitch (1)	2.5" dia x 7" stroke, 1.25" rod (64 mm dia x 178 mm stroke, 32 mm rod)

MOD HITCH HYDRAULICS

3-point Hitch: Sectional valve with four spools — lift, tilt, pitch and auxiliary. This is a pressure compensated valve with a detented "float" position in the lift spool. The main relief valve in this valve is adjusted lower than loader system pressure. (Optional lock check and globe valve kit.)

MOD HITCH APPROXIMATE SHIPPING WEIGHTS

Rear counterweight	1495 lbs (678 kg)
3-point hitch	708 lbs (321 kg)

Extendahoe and Construction King are trademarks of J I Case Company.

NOTE: All specifications are stated in accordance with ICED Definitions or SAE Standards or Recommended Practices, where applicable.

Important

J I Case Company reserves the right to change these specifications without notice and without incurring any obligation relating to such changes.

580C TELESCOPING HYDRAULIC 14' TO 18' (4267 - 5486 mm) EXTENDAHOE

HYDRAULIC EXTENDAHOE OPERATIONAL DATA

	Retracted	Extended
Digging depth — SAE	14'3"	18'1.5"
	(4343 mm)	(5524 mm)
Overall reach from rear axle centerline	21'5.8"	25'3.1"
	(6548 mm)	(7699 mm)
Digging radius from swing pivot	17'11.5"	21'9"
	(5479 mm)	(6629 mm)
Loading height	12'2.2"	14'11.5"
	(3713 mm)	(4559 mm)
Loading reach	5'5"	8'1.2"
	(1651 mm)	(2469 mm)
Bucket rotation — #1 position	162°	162°
— #2 position	146°	146°
Swing arc	180°	180°
Stabilizer spread in operating position		
— angled	9'1.5"	9'1.5"
	(2781 mm)	(2781 mm)
— straight	9'5"	9'5"
	(2870 mm)	(2870 mm)
Stabilizer angle from straight position	20°	20°
Digging force, bucket cylinder, SAE	9827 lbs	9827 lbs
	(43 713 N)	(43 713 N)
Digging force, dipper cylinder, SAE	5374 lbs	3747 lbs
	(23 905 N)	(16 667 N)
Leveling angle (maximum grade on which the backhoe will make a vertical cut)		
— stabilizers angled	12°	12°
— stabilizers straight	13°	13°

HYDRAULIC EXTENDAHOE DIMENSIONS

Overall height maximum	20'9.5"	24'6.5"
	(6337 mm)	(7480 mm)
Transport height	11'4.3"	
	(3462 mm)	
Overall width — travel position		
— stabilizers angled	6'11.8"	6'11.8"
	(2128 mm)	(2128 mm)
— stabilizers straight	7'9.2"	7'9.2"
	(2367 mm)	(2367 mm)



14'-18' (4267 mm - 5486 mm) telescoping Extendahoe provides up to 4' (1219 mm) of extra reach and dig depth.



Self-leveling loader keeps payloads moving.



Case 3-point Mod Hitch increases job opportunities.



14' (4267 mm) backhoe speeds excavating and truck loading cycles.

Sold and serviced by: